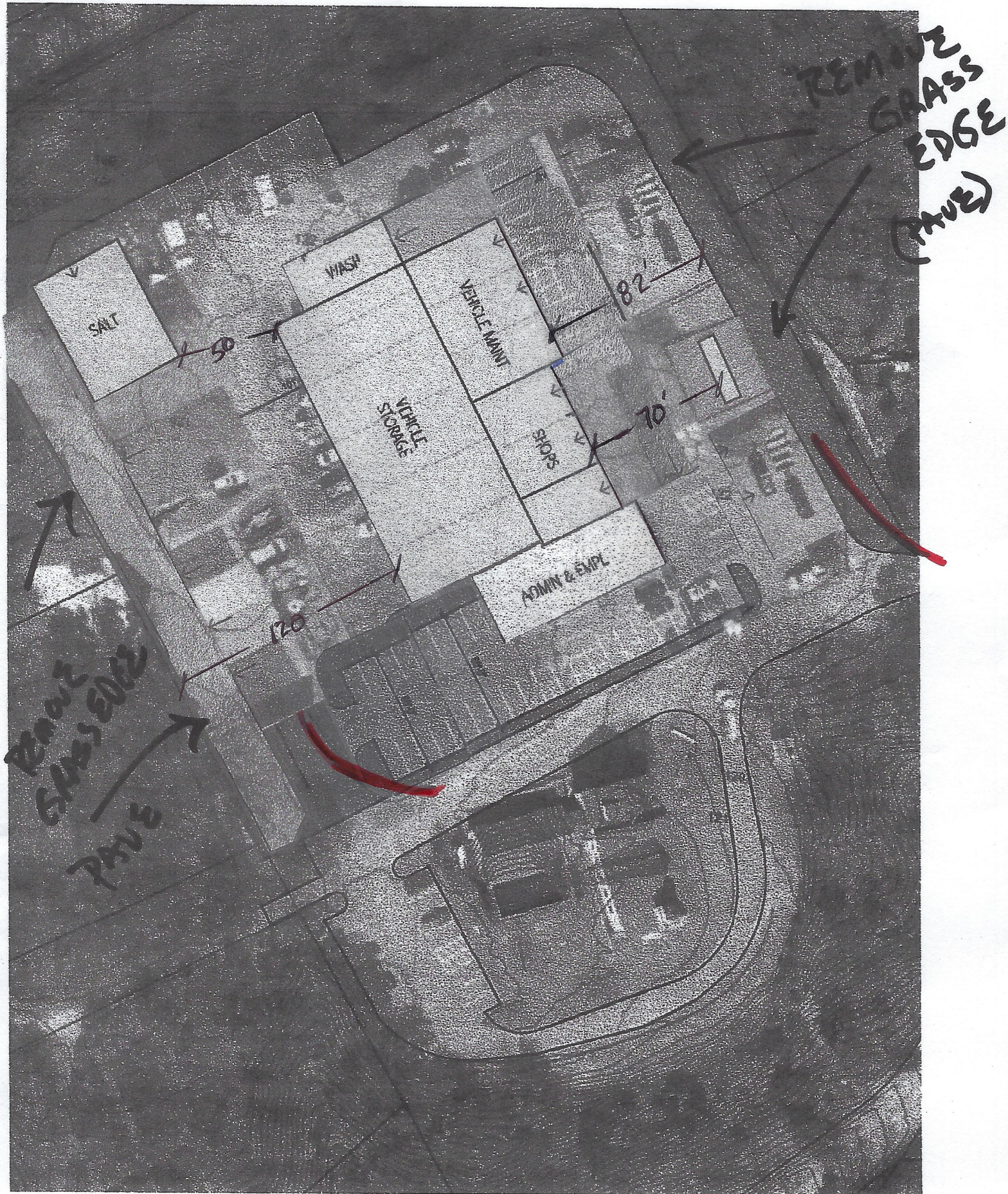




ORIGINAL

100 SCALE



SHIFTED WEST 20'

100 SCALE

To be included in the packet:

"After the meeting, I copied and enlarged the "campus plan" and the "double bay plan" and enlarged them to 60 scale.

I cut out and overlaid the deep bay plan onto the campus plan by maintaining the location of the admin/emp section on the campus plan.

I moved the salt shed to Tony's corner so we can load it from the southern end but access and load equipment possibly from a side door on the east side.

The fuel tanks remain where they are currently (possibly not move them if grading is possible to accommodate.)

The red lines are the current access routes we need to get the trailers in and out of the site, they can't restrict like the W&S design plans suggest. They need to remain wide.

If we remove the grass edge as W&S show on the west property line side, we can continue to park along the property lines while still allowing clear access to the salt shed for trailers of sand and salt. Maybe add a wood fence for neighbors privacy and sound barrier.

Remove the W&S suggested grass along the east property line also and pave it to allow for traffic flow in and around the site.

Referring to the "ORIGINAL" attached plan, as the large building currently sits on this plan, it's a bit offset to the east, leaving a lot of area to the west side. Measurements around the building from the shops to the gas tank(45'), vehicle maintenance to the property line(60'), wash to salt shed(70'), and large bays to property line(140') are all shown.

Using the "SHIFTED WEST" attached plan, shifting the building in its entirety to the west 20 feet, kind of centering it, may improve traffic flow also. The corresponding distances are all shown again.

More parking has been added on the SHIFTED WEST plan toward the area by the red line on the west side to alleviate Bobs concerns about parking for Town Hall and guests and as a result of shifting west, more spots could be added to the east side of the admin section also."

Chris Lucy